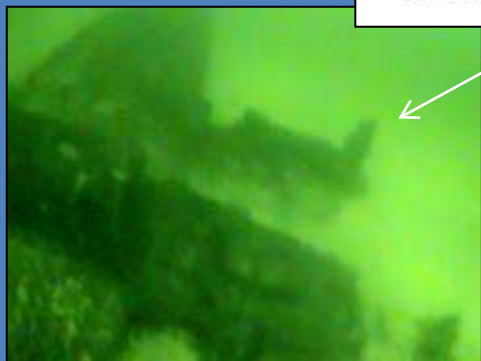
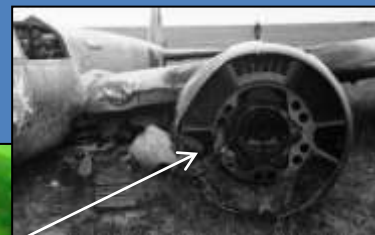
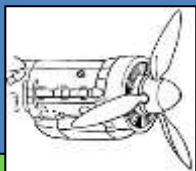


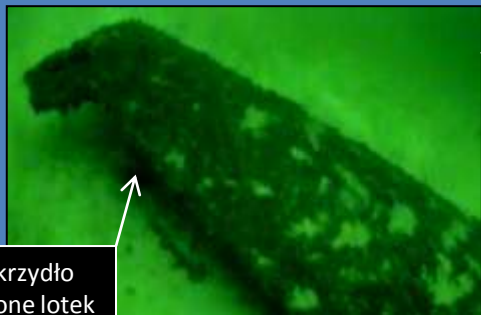


Identyfikacja obiektu podwodnego - wrak samolotu bombowego z II wś

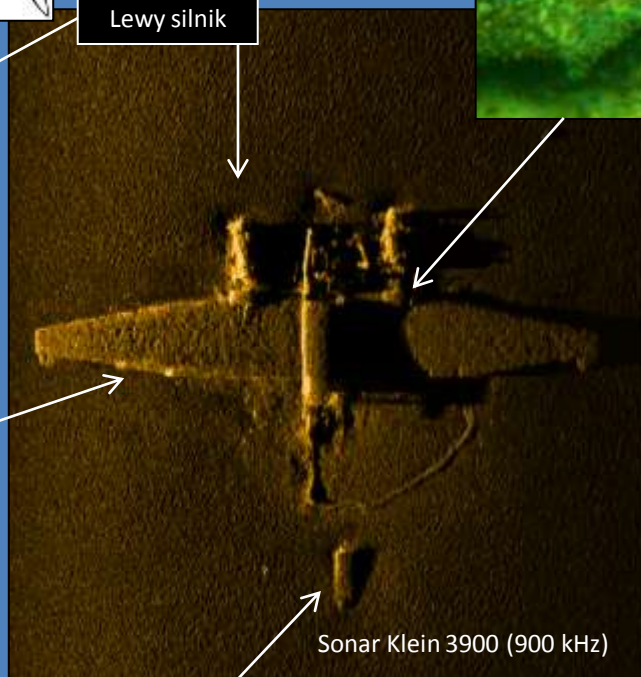
Pomiary – ORP Arctowski, dZHMW
Opracował: Artur Grządziel



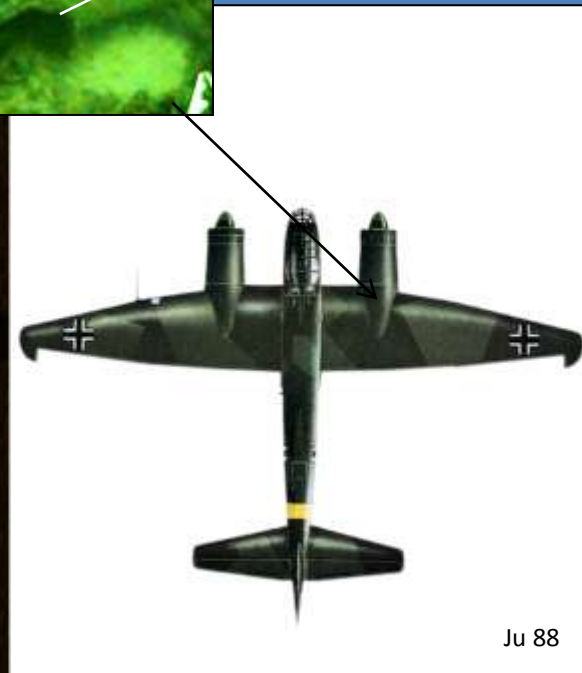
Lewy silnik



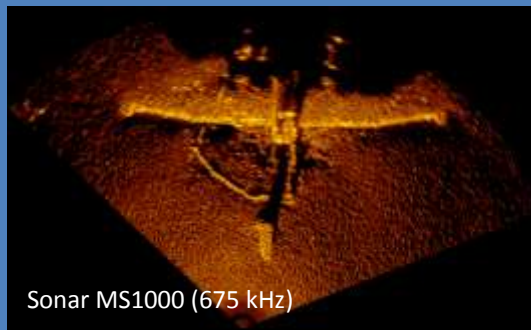
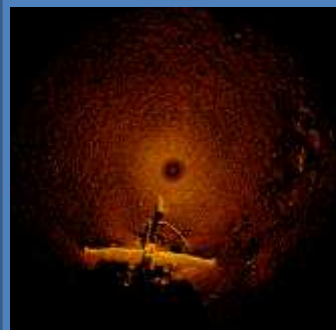
Lewe skrzydło
pozbawione lotek



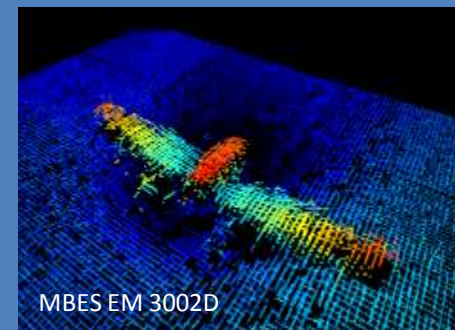
Sonar Klein 3900 (900 kHz)



Ju 88



Sonar MS1000 (675 kHz)



MBES EM 3002D